

**Belize Sustainable Agriculture, Ltd.**  
**Joint Venture Farming Report - July 8, 2013**

**General Overview**

During the week ended July 12, 2013 weather conditions were sunny with a couple of days of rain showers. Localized showers passed through both the San Carlos and Blue Creek areas of Orange Walk, with approximately 3 inches of rain in SC and 3 - 4 inches of rain in BC. Soil moisture is currently at the “waterlogged” stage in Blue Creek due to the black clay soil. San Carlos is more at the “damp” stage, even though it got only slightly less rain; the SC soil drains much faster.

**Thiessen Family Farms – 286 acres (143 Irrigated / 143 Dry – 100% Corn)**

Corn was planted May 28, 2013. They did have a problem with worms early on as did all farmers. They are finished with all the weed control and have had to do several insecticide applications. Two applications of nitrogen (1 at 100 lbs 0-0-46/acre and 1 at 38.6 lbs/acre of 46-0-0 ) have been spread via ground. The corn is now about 6 ½ feet tall.



Beautiful, wide, dark green leaves: looks very good! Corn is about to push out the tassel, which I expect to come out within the next few days. The Thiessens are looking at putting on another 45 lbs/acre of 46-0-0 to give the plant the final push to the finish line; this would make for a combined nitrogen application of 183 lbs of 46-0-0 (equivalent to 84 lbs of pure nitrogen) per acre on the Thiessen’s acreage. However, the window for this last application is quite small, as once the tassel comes out no more dry fertilizer will be applied. Also, we are now getting closer to the stage where we will have to look out for corn ear worms, and a thrice weekly inspection program is being implemented.

(Ignore the guy that keeps checking the corn in the pictures.)

Note: On July 15(as this report was being prepared) another application of 45 lbs/acre of 46-0-0 was applied via air .

**Belize Sustainable Agriculture, Ltd.  
Joint Venture Farming Report - July 8, 2013**

**TF Plantations** – 340 acres (270 Irrigated / 70 Dry – 100% Corn)



The above 2 pictures are from Field #1, also known as “the small pivot field”, which was planted on June 10-12 with seed varieties DeKalb 7088, Syngenta and Pioneer 30F35. This is good looking corn, which grew about a foot in the last week. Another application of insecticide has been sprayed aerially for worms this last week. 50 lbs/acre of 46-0-0 was also applied aerially this past week. This corn is now getting to the stage where it should outgrow pretty much any worm infestation.

As can be seen on the first picture, a rain shower has passed within the last couple of hours.



Additional picture of Field #1



Additional picture of Field #1



**Belize Sustainable Agriculture, Ltd.  
Joint Venture Farming Report - July 8, 2013**



The above pictures are from Field #2, also known as “the large pivot field”; it was planted 27-28 June, 2013. Seed varieties planted are Pioneer 30f35 75 acres, DeKalb-? 20 acres and Syngenta-? 105 acres. The plants are currently 7-8 inches tall. 50 lbs nitrogen (46-0-0) was applied aerially this past week. Weed control will be done this coming week, weather permitting. For comparison purposes a picture of the same field from last week has been inserted below. This provides a clear example of how much the corn has grown in one week.

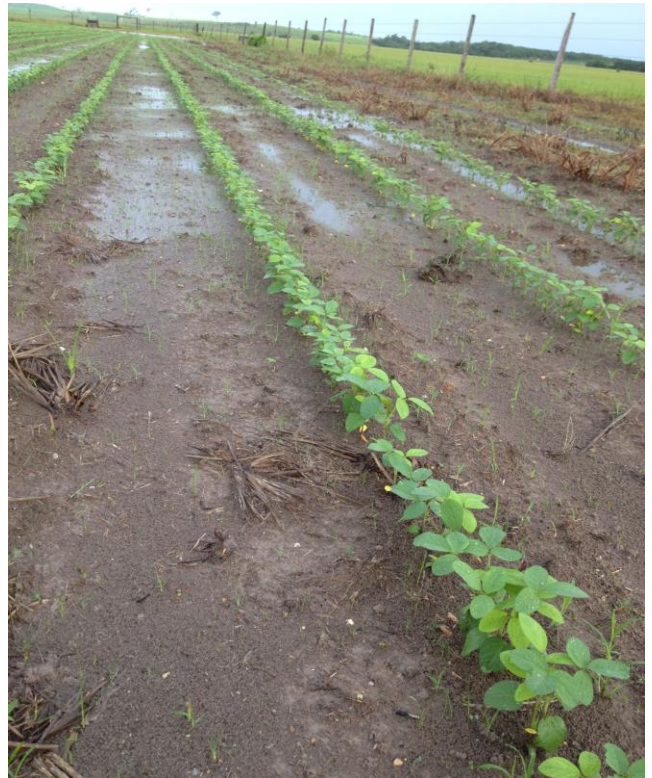


**Belize Sustainable Agriculture, Ltd.**  
**Joint Venture Farming Report - July 8, 2013**

**D&H Farms** – 223 acres (0 Irrigated / 223 Dry – 123 acres Corn / 100 acres Soybeans)

**Soybeans**

The soybeans were planted June 27-28 and they are currently about 6 inches tall. As can be seen on the pictures, Blue Creek soil conditions are currently at the “waterlogged” stage. Blue Creek got about 4 inches of rain this last week and a rain shower passed through just a couple of hours before the pictures were taken. In pictures 1 and 3 you can see how soil compaction during planting inhibits the soil’s ability to get rid of excess water.



The plants are a little on the light green side due to excess water, which should improve once the ground dries out. 40lbs/acre of 15-15-15 were applied aerially this week. One insecticide treatment was also applied aerially for grasshoppers, with a light dose of foliar fertilizer being applied at the same time.



**Belize Sustainable Agriculture, Ltd.  
Joint Venture Farming Report - July 8, 2013**



**Corn**

In the picture below, which is a small field of some 20 odd acres, the corn is waist high. It is very healthy looking corn, although Pete has not yet been able to cultivate for weed control due to the soil being waterlogged. This field received about 3 inches of rain this last week. An insecticide was applied aerially this week for worms. The continued wet weather has not permitted the planting of the last 100 acres of corn, and we will continue to monitor conditions to see if a suitable late season planting window opens up.





**Belize Sustainable Agriculture, Ltd.  
Joint Venture Farming Report - July 8, 2013**

**Neufeld Family Farms – 100 acres (0 Irrigated / 100 – 100% Soybeans)**



Field #JN4- Planted June 28, 2013: 20 acres



Field #JN3- Planted June 27, 2013: 17 acres



Field # JN2 - Planted June 27, 2013: 20 acres



Field #JN1 – Planted June 27, 2013: 60 acres

The field numbers match with the AgriPlot files that were sent earlier.

**Belize Sustainable Agriculture, Ltd.  
Joint Venture Farming Report - July 8, 2013**

Jacob Neufeld finished planting on June 28, 2013, and despite what looked at first like a low stand on his field is now looking pretty good. These fields have received 2-3 inches of rain in the last week. No application of herbicide or insecticide has been applied yet. Plans are for a weed control this week; weather will dictate whether it will be a chemical application or via tillage.

**Conclusion and Summary**

Overall the crops look really good. I am pleased with how Jacob Neufeld's soybeans have improved. They are better than I expected. All the corn fields are looking really good. However, the Blue Creek area could do with less rain for a while now so that the soil can dry out. We will certainly need drier conditions to be able to plant the remaining 100 acres of D & H corn fields. We remain optimistic that this will be possible, although it may involve a late season planting in August (which would produce a December crop). On the other hand, the San Carlos area is handling the rain just fine.

If weather and infestation conditions do not deteriorate significantly, it is possible that we could exceed our yield objectives by a material amount, although it is early in the season to make any firm projections.

No noteworthy reports of major transactions in corn or soybeans. Local Orange Walk buyers are paying in the \$0.27-\$0.29/lb for corn and around \$0.60 for soybeans, which remains the "middle case" of our original JV program scenario.

Generally speaking, the crops in the Cayo and Orange Walk Districts (where most of Belize's corn and soybeans are grown) look good, which would indicate a large harvest. While silos are fairly empty at the moment, earlier crops are likely to achieve a better price, and storage will need to be organized for part of our crop so that it is not sold at a seasonally weak point. We will be working on speaking to buyers in neighboring countries over the next couple of months, now that we have a reasonable quantity of grain to offer.

Thanks!

Abe Dyck

## Belize Sustainable Agriculture, Ltd. Joint Venture Farming Report - July 8, 2013

Grower	Location	Field #	Acres	Irr?	Soil Type	Crop	Seed Variety	Plant Date	Stand - Date	Fertilizer Program	Comments
Thiessen	SC	1	143	Y	Sandy loam (Red)	Corn	DeKalb 7088	May 28	6.5' – 7/13	170lbs/acre 18-46-0 183lbs/acre 46-0-0	Very Healthy
Thiessen	SC	2	142.8	N	Sandy loam (Red)	Corn	DeKalb 7088	May 28	6.5' – 7/13	170lbs/acre 18-46-0 183lbs/acre 46-0-0	Very Healthy
TF Plantations	SC	1	120 30	Y N	Sandy loam (Red)	Corn	DeKalb 7088 Syngenta Pioneer 30F35	June 10-12	18" – 7/13	220 lbs/acre 10-26-26 110lbs/acre 0-0-60 50 lbs/acre 46-0-0	Promising Start
TF Plantations	SC	2	140 66	Y n	Sandy loam (Red)	Corn	Pioneer 30f35 75 acres DeKalb ? 20 acres Syngenta ? 105 ac.	June 27-28	7-8" – 7/13	110lbs/ac 18-46-0 110lbs/ac 0-0-60	Promising Start
D & H	BC	1	100	N	Heavy Black	Soy	Huasteca 400	June 27-29	6" – 7/13	40lbs/ac 15-15-15	Replanted June 27-28 after first seed had very low germination.
D & H	BC	2	26.12	N	Heavy Black	Corn	DeKalb 7088	June ??	3.5' – 7/13	100lbs/acre 14-36-12	Mostly Very Healthy
D & H	BC	3	100	N	Heavy Black	Corn	DeKalb 7088	TBA		??	Waiting for dry spell
Neufeld	SC	JN4	19.82	N	Sandy loam (Red)	Soy	CARDI 1088	June 28	6" – 7/13	120lbs/acre 15-15-15	Promising Start
Neufeld	SC	JN3	16.56	N	Sandy loam (Red)	Soy	Huasteca 400	June 27	6" – 7/13	120lbs/acre 15-15-15	Promising Start
Neufeld	SC	JN2	20.17	N	Sandy loam (Red)	Soy	CARDI 1088	June 27	6" – 7/13	120lbs/acre 15-15-15	Promising Start
Neufeld	SC	JN1	60.73	N	Sandy loam (Red)	Soy	CARDI 1088	June 27	6" – 7/13	120lbs/acre 15-15-15	Promising start

Note – A Field sizes, seed varieties and certain other details are subject to final confirmation